

# **Playing College Sports and the National Association of Intercollegiate Athletics**

Angela Crawford

*Manager of Marketing and Communications*

NCA Multi-Sport Clinic / Wed., July 23 / 8:30 a.m.

# About the NAIA

The NAIA exists to advance character-driven intercollegiate athletics

- The NAIA provides high school student-athletes the opportunity to keep playing sports while receiving an outstanding education
- Every student-athlete matters and receives the personal attention they need to succeed
- The NAIA intentionally teaches character and prepares student-athletes to be tomorrow's leaders

# Keep playing

- 60,000 student-athletes play in the NAIA today
- The NAIA has colleges and universities throughout the United States and Canada
- Student-athletes have the chance to compete in 23 national championships
- NAIA student-athletes receive more than \$500 million in scholarships every year

# Recruiting in the NAIA

- No communication restrictions between NAIA coaches and high school athletes
- No recruiting calendar
- NAIA Connections
- Coaches can connect with student-athletes using texting, email, phone, Twitter, Facebook and any other social media

# NAIA sports



# Sports offered in the NAIA

## Championship Sports

- Men's and Women's Cross Country
  - #NAIAxc
- Football
  - #NAIAfootball
- Men's and Women's Soccer
  - #NAIASoccer
- Women's Volleyball
  - #NAIAvolleyball
- Men's Basketball (two divisions)
  - #NAIADIMBB #NAIADIIMBB
- Women's Basketball (two divisions)
  - #NAIADIWBB #NAIADIWBB
- Men's and Women's Swimming and Diving
  - #NAIASwim
- Men's and Women's Indoor Track and Field
  - #NAIAtrack
- Wrestling
  - #NAIAwrestle

- Baseball
  - #NAIAbaseball
- Men's and Women's Golf
  - #NAIAgolf
- Softball
  - #NAIASoftball
- Men's and Women's Tennis
  - #NAIAtennis
- Men's and Women's Outdoor Track and Field
  - #NAIAtrack

## Emerging Sports

- Men's Volleyball
- Men's Bowling
- Women's Bowling
- Competitive Cheer and Dance
- Men's Lacrosse
- Women's Lacrosse

# Where are NAIA schools located?





## Connect with the NAIA

**PLAYNAIA**  
Your college sports experience starts here.

[www.NAIA.org](http://www.NAIA.org)

**Where every student-athlete matters**

**PlayNAIA**  
5,266 likes · 1,251 talking about this

Non-Profit Organization  
Your college sports experience starts with PlayNAIA - the online resource for NAIA players - past, present and FUTURE. <http://www.PlayNAIA.org/>

About Photos Likes Events Videos

Highlights

**PlayNAIA** shared a link.  
6 hours ago

Did you see that No. 19 Viterbo University defeated No. 24 Taylor University Trojans, 3-0, in the NAIA Volleyball Match of the Week last week? It's the first win for the V-Hawks over a nationally

PlayNAIA is on Facebook.  
To connect with PlayNAIA, sign up for Facebook today.  
[Sign Up](#) [Log In](#)

Like

5,266

Also On  
<http://www.playnaia.org/>  
[http://www.twitter.com/Play\\_NAIA](http://www.twitter.com/Play_NAIA)



# Connect with the NAIA

- [www.youtube.com/playnaia](http://www.youtube.com/playnaia)



- [www.facebook.com/PlayNAIA](http://www.facebook.com/PlayNAIA)



- [www.twitter.com/Play\\_NAIA](http://www.twitter.com/Play_NAIA)



- [www.Instagram.com/playnaia](http://www.Instagram.com/playnaia)



# Game on.



# Champions of Character



# Champions of Character

- Champions of Character provides training to ensure NAIA student-athletes know, do and value the right thing in all areas of life
- Five core values: integrity, respect, responsibility, sportsmanship and servant leadership
- These values are put into play, accounted for and measured at all NAIA schools



## The NAIA Eligibility Center

The screenshot displays the PlayNAIA website, which serves as the official clearinghouse for NAIA eligibility. The browser window shows the URL <http://www.playnaia.org/index.php>. The website features a navigation bar with links for Students, Parents & Coaches, High School Administrators, and NAIA Members. A prominent "Eligibility Center Login" box is visible, containing fields for E-mail and Password, a "SIGN IN" button, and a "Forgot Password?" link. The main banner area includes the NAIA logo with the tagline "Champions of Character", a large "PLAYNAIA" logo, and the text "Your college sports experience starts here." A yellow sticky note graphic says "Register now to Play!". Below the banner, there are three main sections: "WHAT IS THE ELIGIBILITY CENTER?" (Discover the academic and athletics opportunities offered at an NAIA school), "REGISTER TO PLAY" (Register to have your eligibility determined to play in the NAIA!), and "ARE YOU AN ADMINISTRATOR?" (High school administrators: Create a school profile to help students through the process.). The footer contains the NAIA logo, copyright information, and links to Terms of Use, Privacy Policy, and Contact Us.

# The NAIA Eligibility Center

- The NAIA Eligibility Center determines the academic and athletic eligibility of all prospective student-athletes
- It delivers on our larger promise of integrity by ensuring not only inbound eligibility but a level of fairness among competitors
- Student-athletes who register have a unique opportunity to connect personally with NAIA coaches before choosing their college



## Register with the NAIA Eligibility Center

The screenshot shows the PlayNAIA website interface. At the top, there's a navigation bar with links like 'Most Visited', 'FileBound', 'Basecamp', 'PlayNAIA Blog', 'Log In', 'Facebook', 'PlayNAIA', 'NAIAHelp', 'Twitter', 'PlayNAIA', 'Google Analytics', 'Scoutware', 'NAIA', and 'PlayNAIA Blog'. Below this is a banner for 'THE NAIA ELIGIBILITY CENTER' with a 'Champions of Character' logo. A yellow sticky note on the right says 'Register now to Play!'. The main content area features a large 'PLAYNAIA' logo over a photo of athletes, with the tagline 'Your college sports experience starts here.' Below this, there are three main sections: 'WHAT IS THE ELIGIBILITY CENTER?' (with a description of academic and athletic opportunities), 'REGISTER TO PLAY' (highlighted with a red circle and containing a 'Register to have your eligibility determined to play in the NAIA!' button), and 'ARE YOU AN ADMINISTRATOR?' (with a description for high school administrators). At the bottom, there's a footer with the NAIA logo and copyright information: '© National Association of Intercollegiate Athletics • Terms of Use • Privacy Policy • Contact Us'.

# Register with the NAIA Eligibility Center

- All first-time NAIA athletes must register
- NCAA and NAIA are different; if a student wants to play at an NAIA college or university s/he has to register with the NAIA Eligibility Center
- Register at [www.PlayNAIA.org](http://www.PlayNAIA.org)

# Registration fees and waivers

- Fee = \$70 for U.S./Canadian entering freshmen and \$90 for U.S./Canadian transfer students
- Fee waivers are available based on need
  - HS students – ACT/SAT fee waiver, participation in free/reduced school lunch, Pell Grant of at least \$4,500
  - College transfer students – Pell Grant of at least \$4,500

# NAIA eligibility requirements

- Graduating HS seniors must meet 2 requirements:
  - Minimum GPA of 2.0 on 4.0 scale
  - 18 ACT or 860 Critical Reading/Math SAT
  - Graduation in top 50% of class

# Submit ACT/SAT test scores

- Students should list the NAIA as one of the places they want their scores sent
- NAIA Eligibility Center code: 9876
- Students should contact ACT or College Board to have scores sent if they have already taken the test

# More about the ACT and SAT

- SAT score is the combined math and reading scores
- ACT is the composite score
- Writing sections are not used for eligibility
- Score must be achieved in one sitting



# Sending transcripts

- Transcript must be official
- Transcript must come directly from the school
- Send only one high school transcript
- Send transcript after high school graduation unless student qualifies to receive an Early Decision

# Early Decision requirements

- 18 ACT or 860 Critical Reading/Math SAT
- At least a “B” average (3.0 on a 4.0 scale) after the completion of junior year of high school or at least a 2.5 on a 4.0 scale midway through senior year
- If student qualifies, send us the transcripts early for the student to receive a determination before graduation

# Attending an NAIA school

- NAIA Eligibility Center determinations are separate from admission to college
- Students should check with the school they are interested in to find out about admissions requirements and scholarship opportunities

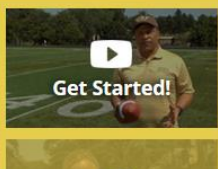
## Play On!

Help your students be a part  
of the NAIA's 60,000 college athletes  
at one of 250 schools



### Get Started!

Did you know that of all the students who play sports in high school, about 7 out of 100 will go on to play in college, but only 1% will play for an NCAA Division I school? There are thousands of opportunities to play your sport at smaller four-year universities that belong to the NAIA, the National Association of Intercollegiate Athletics.



### College Info Video Series

## Additional Resources

We've put together some additional resources we think will be helpful to you and your student-athletes in guiding you through the eligibility and recruiting process.



### Presentation and Script

Don't have the ability to play the videos? We've included all the same content in this presentation and accompanying script.



### Registration Check List

An easy-to-follow, step-by-step check list of what a high school student needs to do to complete the eligibility registration process.



### The NAIA Guide for the College-Bound Student-Athlete

If you've got questions, you'll find the answers in this guide. It covers everything from financial aid and scholarships to international students to remaining eligible once a student is in college.

[Presentation & Script](#)

[Registration Check List](#)

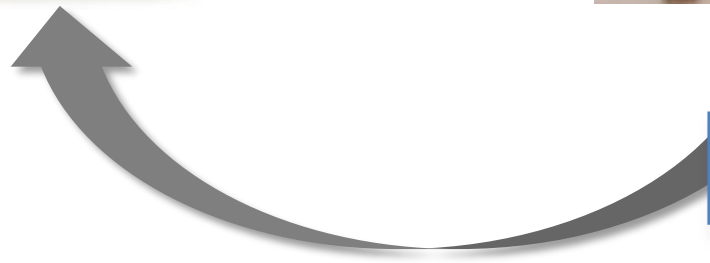
[The NAIA Guide](#)

# NAIA Connections

Student sends Sport Resume directly



Coach & admissions can  
search for students



# NAIA Connections school search

About Me

My Academic Info

My Sports Experience

Profile Summary

My NAIA Connections

## NAIA Connections Search

You may send your Sport Resume to up to 5 NAIA schools. You have sent 0 of your 5 choices.

Return to Sport Resume

### Find an NAIA school that matches your preferences

<input type="checkbox"/> Baseball	<input type="checkbox"/> Men's Indoor T&F	<input type="checkbox"/> Women's Basketball Div I	<input type="checkbox"/> Women's Soccer
<input type="checkbox"/> Men's Basketball Div I	<input type="checkbox"/> Men's Outdoor T&F	<input type="checkbox"/> Women's Basketball Div II	<input type="checkbox"/> Softball
<input type="checkbox"/> Men's Basketball Div II	<input type="checkbox"/> Men's Soccer	<input type="checkbox"/> Women's Cross Country	<input type="checkbox"/> Women's Swimming/Diving
<input type="checkbox"/> Men's Cross Country	<input type="checkbox"/> Men's Swimming/Diving	<input type="checkbox"/> Women's Golf	<input type="checkbox"/> Women's Tennis
<input type="checkbox"/> Football	<input type="checkbox"/> Men's Tennis	<input type="checkbox"/> Women's Indoor T&F	<input type="checkbox"/> Women's Volleyball
<input type="checkbox"/> Men's Golf	<input type="checkbox"/> Wrestling	<input type="checkbox"/> Women's Outdoor T&F	

☒ View schools that sponsor ALL selected sports ☐ View schools that sponsor ANY of the selected sports

Please note sport lists may vary slightly when institutions update their programs each summer for the upcoming academic year. Emerging Sports do not currently require eligibility to be determined by the NAIA Eligibility Center.

Select up to 5 states

Select other preferences

Select State

Enrollment  >  No Preference

Select State

Public/Private  No Preference

Select State

Faith Based  No Preference

Select State

Select State

Go

View All Schools

Search Results

Check the box to the left of the school name to indicate the schools you want to connect with, and we'll send your Sports Resume directly to the institution.

College or University	City, State	Conference	Enrollment
-----------------------	-------------	------------	------------



## High school profiles – for high school staff

NATIONAL ASSOCIATION OF  
INTERCOLLEGIATE ATHLETICS



### THE NAIA ELIGIBILITY CENTER

Join Us On:



[Students](#) [Parents & Coaches](#) [High School Administrators](#) [NAIA Members](#)

#### Eligibility Center Login

E-mail

SIGN IN

Password

[Forgot Password?](#)

Register  
now  
to Play!

# PLAYNAIA

*Your college sports experience starts here.*

#### WHAT IS THE ELIGIBILITY CENTER?

Discover the academic and athletics opportunities offered at an NAIA school. ▶



#### REGISTER TO PLAY

Register to have your eligibility determined to play in the NAIA! ▶

#### ARE YOU AN ADMINISTRATOR?

High school administrators: Create a school profile to help students through the process. ▶

## Set up your school's profile

NAIA Eligibility Center - PlayNAIA - Hi...

Home
NAIA Sports
Find an NAIA School
NAIA Connections Service
About the NAIA
Contact Us

# PLAYNAIA

Your college sports experience starts here.

INTERESTED IN PLAYING NAIA  
SPORTS FOR THE FIRST TIME IN  
**2011-2012?**

## GET YOUR EARLY DECISION

**High School Seniors**  
click here to see if you qualify!

NEED MORE INFO?

**DOWNLOAD**

NAIA Guide for the College-Bound Student-Athlete

It's as easy as

**9 8 7 6**

to send your **ACT** and **SAT**  
scores to the **NAIA**.

### Administrators: Create a Profile for Your High School

It's easy for high school administrators to register. Just follow the three simple steps.

**Information to have on hand before starting:**

- High school CEEB #
- Primary contact person
- Contact information for school principal and guidance counselor
- Is class rank maintained?
- Grading scale
- Details about transcript format (Are class rank and graduation date included? Electronic submission available?)

---

**Step 1** Create an account below using a valid email address.

**Step 2** Validate email address. A validation email is generated immediately after clicking register below, so if it does not appear in your inbox right away, be sure to check your spam or junk folder.

**Step 3** Complete your high school's profile.

**Optional** Add more users for your high school. [Learn how.](#)

---

First Name:

Last Name:

Email:

Confirm Email:

Password:  Minimum six characters.

Confirm Password:

Security Question:

Answer:

**Select High School**

Enter High School CEEB#:

OR

Select High School from List

Country:

State:

If your institution **is not listed**, enter it below to continue the registration process.

School Name:

**Register**

Done

( # )



# View status of students

## Student List For Olathe South High School

Estimated Enroll Season: 2011-12

Select Season

### Students

▲ NAIA ID	◆ Name Date of Birth	◆ Est. Grad. Date	◆ Est. Enroll Date	◆ Sports	◆ Status
0011920	Baxter, Sean 06/25/93	2011-05	2011-08	M-SOC	Early Decision - Eligible 4 Seasons
0017539	Clifton, Daniel 08/18/93	2011-05	2011-08	M-SOC	Eligible - 4 seasons available
0018863	Robertson, Brett 08/01/92	2011-05	2011-08	M-SOC	Eligible - 4 seasons available
0021998	Clark, Bristol 09/09/92	2011-05	2011-08	W-SOC	Early Decision - Eligible 4 Seasons
0022772	Clark, Emilee 07/04/93	2011-05	2011-08	W-VB	Early Decision - Eligible 4 Seasons
0024316	McKnight, Laura 11/13/92	2011-05	2011-08	W-SOC	Early Decision - Eligible 4 Seasons
0024406	Harris, Marissa 02/03/93	2011-05	2011-08	W-SOC	Eligible - 4 seasons available
0028865	king, stephen 12/12/92	2011-05	2011-08	FB	Pending




# After online registration

- Registration status will be “Pending” until someone on staff begins to review the student’s case
- It is not necessary for a student to receive a determination before accepting a scholarship or a place on a school’s team
- Students need to register early to avoid delays

# Short List

- Made up of a coach's most serious recruits
- Students on Short Lists will have priority in receiving an eligibility determination
- Each school and coach decides who to place on the Short List, but *students must be registered first*
- To find out if a student is on a Short List, or to be placed on a Short List, students should contact the NAIA coach

# Questions?

- Visit: **PlayNAIA.org**
- Email: **ECinfo@naia.org**
- Call: **866.881.6242**
- Check out our social media:
  -  **Facebook.com/PlayNAIA**
  -  **Twitter.com/Play\_NAIA**
  -  **Instagram.com/playnaia**